


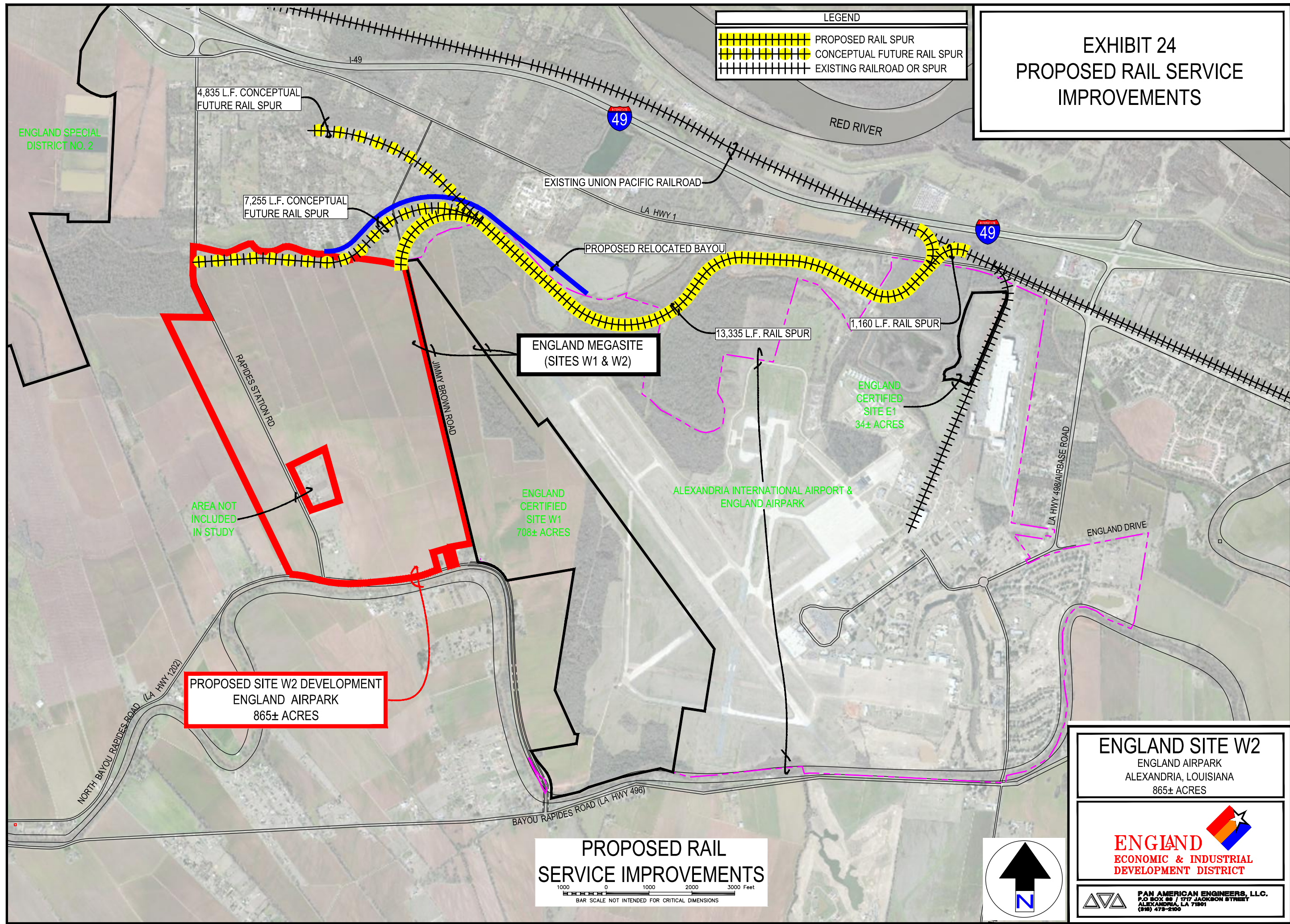


# EXHIBIT 24 PROPOSED RAIL SERVICE IMPROVEMENTS

**LEGEND**

-  PROPOSED RAIL SPUR
-  CONCEPTUAL FUTURE RAIL SPUR
-  EXISTING RAILROAD OR SPUR



4,835 L.F. CONCEPTUAL FUTURE RAIL SPUR

7,255 L.F. CONCEPTUAL FUTURE RAIL SPUR

**ENGLAND MEGASITE  
(SITES W1 & W2)**

13,335 L.F. RAIL SPUR

1,160 L.F. RAIL SPUR

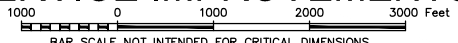
ENGLAND CERTIFIED SITE E1  
34± ACRES

ENGLAND CERTIFIED SITE W1  
708± ACRES

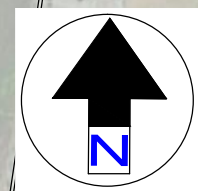
ALEXANDRIA INTERNATIONAL AIRPORT & ENGLAND AIRPARK

**PROPOSED SITE W2 DEVELOPMENT  
ENGLAND AIRPARK  
865± ACRES**

**PROPOSED RAIL SERVICE IMPROVEMENTS**



BAR SCALE NOT INTENDED FOR CRITICAL DIMENSIONS



**ENGLAND SITE W2**  
ENGLAND AIRPARK  
ALEXANDRIA, LOUISIANA  
865± ACRES

**ENGLAND**   
ECONOMIC & INDUSTRIAL  
DEVELOPMENT DISTRICT

 **PAN AMERICAN ENGINEERS, L.L.C.**  
P.O. BOX 89 / 1717 JACKSON STREET  
ALEXANDRIA, LA 71901  
(504) 473-2100