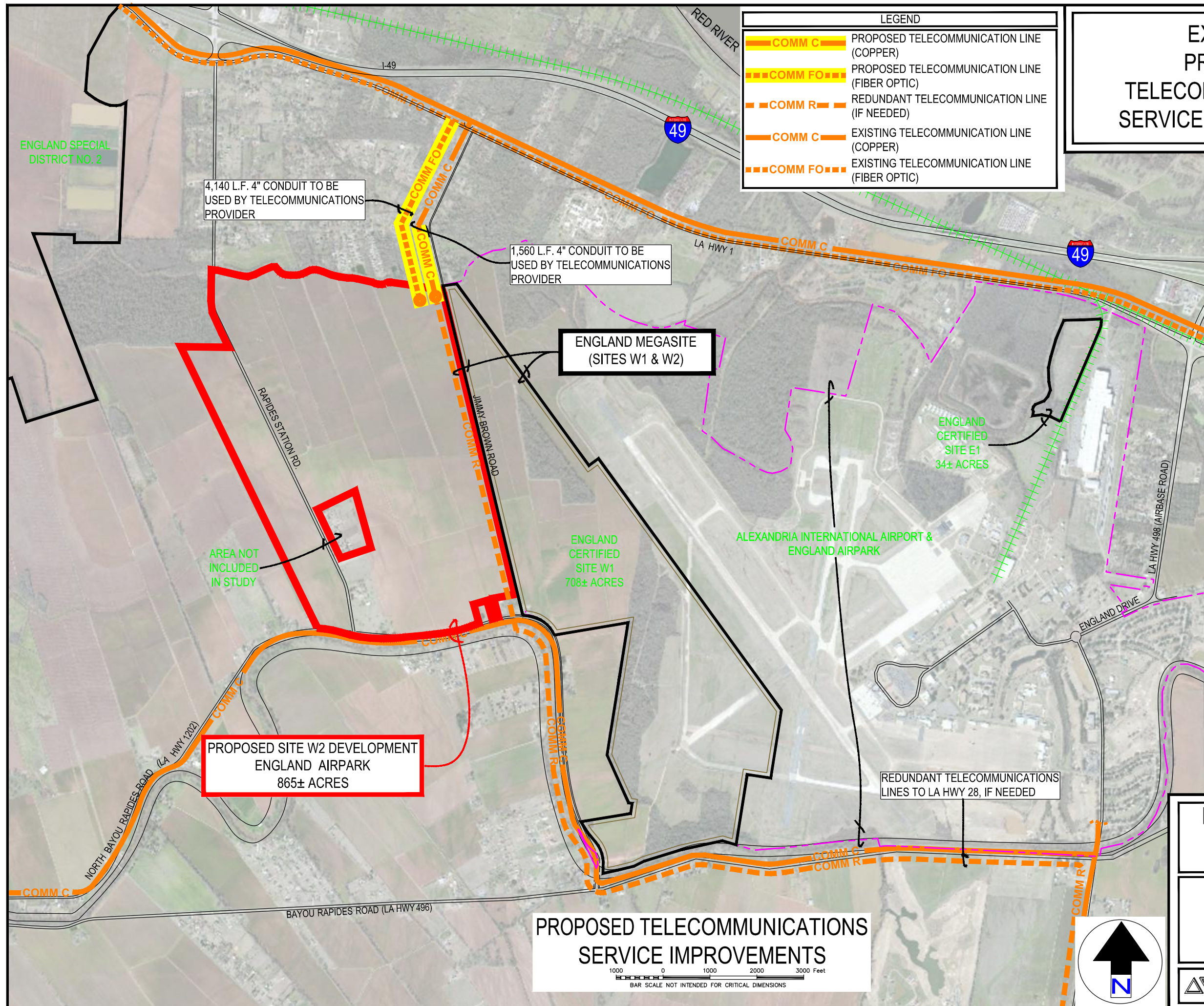


EXHIBIT 23 PROPOSED TELECOMMUNICATIONS SERVICE IMPROVEMENTS

| LEGEND | |
|--------|---|
| | PROPOSED TELECOMMUNICATION LINE (COPPER) |
| | PROPOSED TELECOMMUNICATION LINE (FIBER OPTIC) |
| | REDUNDANT TELECOMMUNICATION LINE (IF NEEDED) |
| | EXISTING TELECOMMUNICATION LINE (COPPER) |
| | EXISTING TELECOMMUNICATION LINE (FIBER OPTIC) |

- NOTES:
- EXACT LOCATIONS OF EXISTING TELECOMMUNICATIONS ARE CONSIDERED PROPRIETARY AND WERE NOT RELEASED BY THE TELECOMMUNICATIONS PROVIDER. LOCATIONS ARE APPROXIMATE.
 - AT&T IS THE INCUMBANT LOCAL EXCHANGE CARRIER IN THE AREA AND HAS A PROGRAM FOR CONSTRUCTING NEW TELECOMMUNICATIONS INFRASTRUCTURE FOR INDUSTRIAL CUSTOMERS WITH LARGE COMMUNICATIONS NEEDS, FOR MINIMAL COST TO THE CUSTOMER. UNDER THIS PROGRAM, AT&T RESERVES THE RIGHT TO SELECT THE ROUTES AND COMPONENTS OF ALL INFRASTRUCTURE, WHICH IS TYPICALLY POLE-MOUNTED. IN THE EVENT A POTENTIAL CUSTOMER REQUIRES UNDERGROUND TELECOMMUNICATIONS INFRASTRUCTURE, OR IF A SPECIFIC ROUTE IS REQUIRED, THE PLAN SHOWN HEREIN IS PROVIDED AS A PLANNING TOOL, AND INCLUDES THE CONSTRUCTION OF CONDUIT TO BE USED FOR COMMUNICATIONS LINES BY THE TELECOMMUNICATIONS PROVIDER.



4,140 L.F. 4" CONDUIT TO BE USED BY TELECOMMUNICATIONS PROVIDER

1,560 L.F. 4" CONDUIT TO BE USED BY TELECOMMUNICATIONS PROVIDER

ENGLAND MEGASITE (SITES W1 & W2)

ENGLAND CERTIFIED SITE E1
34± ACRES

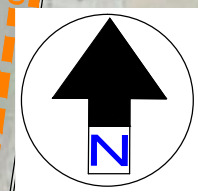
ENGLAND CERTIFIED SITE W1
708± ACRES

PROPOSED SITE W2 DEVELOPMENT
ENGLAND AIRPARK
865± ACRES

REDUNDANT TELECOMMUNICATIONS LINES TO LA HWY 28, IF NEEDED

PROPOSED TELECOMMUNICATIONS SERVICE IMPROVEMENTS

1000 0 1000 2000 3000 Feet
BAR SCALE NOT INTENDED FOR CRITICAL DIMENSIONS



ENGLAND SITE W2
ENGLAND AIRPARK
ALEXANDRIA, LOUISIANA
865± ACRES



PAN AMERICAN ENGINEERS, LLC.
P.O. BOX 88 / 1717 JACKSON STREET
ALEXANDRIA, LA 71901
(504) 473-2100