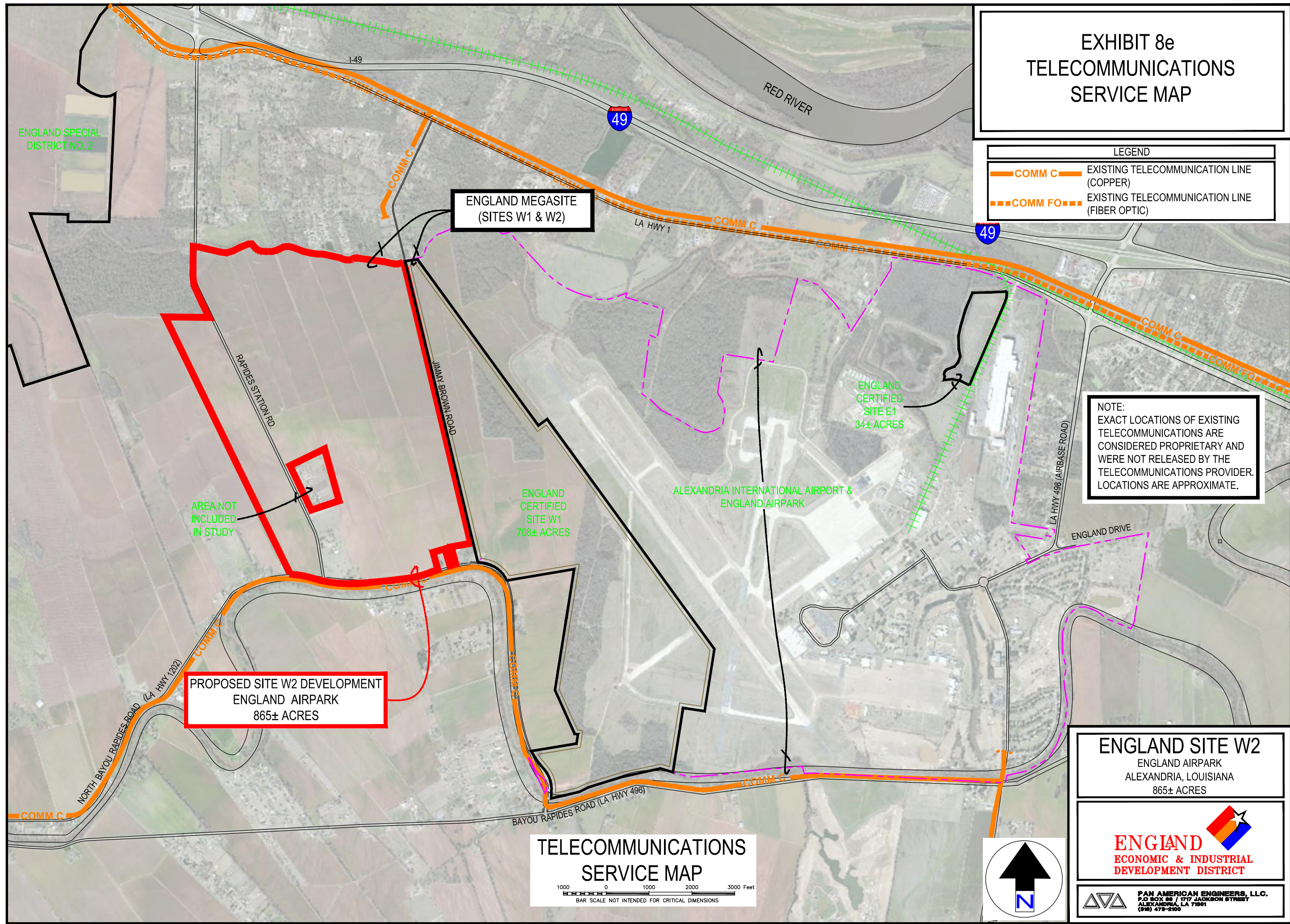


EXHIBIT 8e TELECOMMUNICATIONS SERVICE MAP

LEGEND	
	EXISTING TELECOMMUNICATION LINE (COPPER)
	EXISTING TELECOMMUNICATION LINE (FIBER OPTIC)

NOTE:
EXACT LOCATIONS OF EXISTING TELECOMMUNICATIONS ARE CONSIDERED PROPRIETARY AND WERE NOT RELEASED BY THE TELECOMMUNICATIONS PROVIDER. LOCATIONS ARE APPROXIMATE.



ENGLAND SPECIAL DISTRICT NO. 2

ENGLAND MEGASITE (SITES W1 & W2)

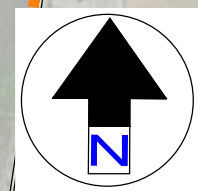
ENGLAND CERTIFIED SITE E1
34± ACRES

ENGLAND CERTIFIED SITE W1
708± ACRES

ALEXANDRIA INTERNATIONAL AIRPORT & ENGLAND AIRPARK

PROPOSED SITE W2 DEVELOPMENT
ENGLAND AIRPARK
865± ACRES

AREA NOT INCLUDED IN STUDY



ENGLAND SITE W2
ENGLAND AIRPARK
ALEXANDRIA, LOUISIANA
865± ACRES



PAN AMERICAN ENGINEERS, L.L.C.
P.O. BOX 89 / 1717 JACKSON STREET
ALEXANDRIA, LA 71901
(504) 473-2100